



The Iraqi Red Crescent Society

The Mosul Liberation Operation Humanitarian Crisis 2016

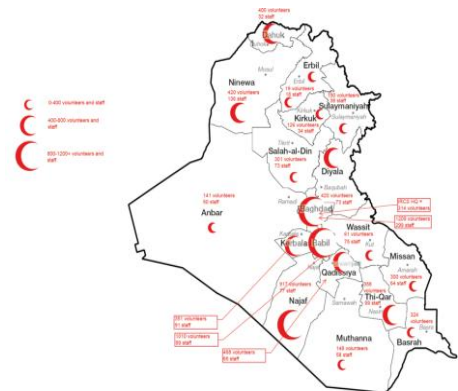
Introduction

The Iraqi Red Crescent society (IRCS) is an Independent, volunteer-based National Society that works to alleviate suffering for all. We are also an auxiliary body to public authorities/government when responding to humanitarian needs. However, we maintain our independence from authorities and function as an autonomous, apolitical, non-partisan organization. Our interventions alleviate the suffering for all, in accordance with the movement's fundamental principles since 1932; we operate inside and outside Iraq as we are part of the international movement of the Red Cross Red Crescent movement and guardian of the international law and treaties

Our Fundamental principles humanity, independence, impartiality, neutrality voluntary services, unity and universality

Our volunteers and staff are part of their local communities and they serve during peace and nature or manmade disaster , our major Programs ranges between Relief, First Aid and health and medical services , water and sanitation (WATSAN) , Dissemination of the international humanitarian law(IHL) , Youth activities ,Restoring family links (RFL) and awareness programs for the war remnant (ERWA) .we aid the public in all ceremonies and public events beside sponsoring youth activities .

IRCS main structure distributed on the 18 governorates including the capital Baghdad , 93 offices, with human power of 7530 volunteers 2195 staff beside our offices in Amman .Beirut and Tehran



Since 2014 Iraq faced major humanitarian crisis created by war against terror that affected 1/3 of the country causing the displacement of more than 3 million Iraqis and the destruction of

main cities and immense economic drawback .to regain the affected territories there is ongoing liberation operations at Anbar , Kirkuk ,Salahaddin and Mousl .the IRCS is key player in the relief operation of the IDPs during evacuation , sheltering and even recovery beside its continuous efforts to support the vulnerable communities hosting the IDPs and any place inside Iraq and in the neighboring countries .

We are partner with national societies from the Scandinavian countries, Germany, France, Japan, UK, USA, Turkey, Iran, Qatar, the ICRC and the IFRC in relief and different developmental programs to full fill our 2014-2018 strategy.

IRCS auxiliary rule to the Iraqi government and public authorities;
The prime minister office

- Member in the national operation cell(PM NOC) and one local level in each governorate
- Member in Operations Room for Relieving and Sheltering Displaced People
- Member in the JCMC (Joint Coordination and Monitoring Center)

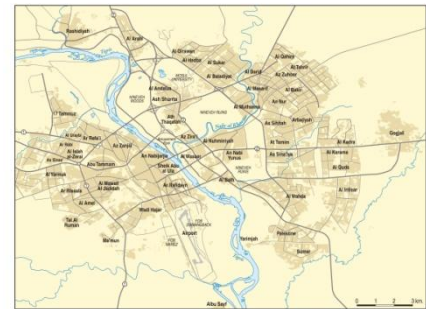
The Mosul Operation

Nineveh Governorate is a governorate in northern Iraq that contains the ancient Assyrian city of Nineveh. It was an integral part of Assyria from the 25th century BC to 7th century AD, and still retains an indigenous



The Iraqi Red Crescent Society

Assyrian community to this day. It has an area of 37,323 square kilometers ($3.7323 \times 10^{10} \text{ m}^2$) and an estimated population of 2,453,000 people in 2003. Its chief city and provincial capital is Mosul, which lies across the Tigris river from the ruins of ancient Nineveh. Tal Afar is the second-biggest city. An ethnically, religiously and culturally diverse region, it has been subject to attacks by the terrorist organization known as the Islamic State of Iraq and the Levant, with Mosul being captured on 10 June 2014. Neighboring Iraqi regions are Duhok Governorate to the north, Erbil Governorate to the east, Saladin Governorate to the south-east, and Al Anbar Governorate to the south. In the west it shares a border with Syria, mostly Al-Hasakah Governorate, and also Deir ez-Zor Governorate in the south.



There are significant degrees of uncertainty associated with predicting future displacement, yet all available information and analyses indicate this will continue for the foreseeable future. The present emergency plan will focus on an estimated **100,000 families** in acute need of support, according to the IRCS's own assessments. For the 9 month planning period for this operation, this represents an average case load of approximately 10,000 families every month which the IRCS will aim to support. **As the operation evolves and further displacements take place, the population targeted by the operation may be increased. Flexibility is therefore a key aspect of the emergency operation's response strategy.**

As the situation evolves, IRCS will gradually undertake further needs assessment. However, given the new influx of IDPs from armed fighting, IRCS has chosen to focus on rapid distribution of lifesaving emergency relief package. With resources mobilized from its own sources, IRCS runs field kitchens for distribution of cooked food, drinking water, health, first aid and psychosocial support to people arrived to in new locations.

Liberation of Mousl operation summer 2016

The new humanitarian crisis facing the country is the operation for mousl liberation The new IDP wave require adoption of national operation plan for relief, sheltering and recovery of estimated 500,000 IDPs to improve the preparedness and response, prompt deployment .augment resources management level, better data and information exchange and ensure the contentment of the IDPs with performance of all parties

As witness in similar situation the Iraqi governments and its supreme committee, UN and its agencies ,many international and local NGO will take part in the relief operation that necessitate the adoption of the national strategic plan to save and maintain the lives of thousands of people among them children ,women and senior citizens

The IRCS will discuss in this document the details of the operation; since any operation needs

- A. What is the plan?
- B. What are the route of the IDPs
- C. What are the needs
- D. Challenges

A- What is the plan?

During the repeated meetings of the PM/NOC and others government agencies with the participation of the UN and its agency to discuss humanitarian situations of the new wave of IDPs the IRCS presented its national emergency plan for the humanitarian needs of the vulnerable and the IDPs whom escaping the Mosul city during the operation of liberation.

The plan based to unity of all the actors with better cooperation and coordination, information exchange and the IRCS previous experience in similar situations, taking in consideration the complexity of security, prolonged background checks, the aggressive military operation and the extreme weather in that area .



The Iraqi Red Crescent Society

According to the national relief plan the government level duties as follows :-

- i. The national crisis cell will lead the relief efforts ,plan and develop the operations ,assign the rules and responsibilities of the its members
- ii. The Operations Room for Relieving and Sheltering Displaced People will execute the operations
- iii. The JCMC will monitor and record the operations and relief efforts
- iv. The IRCS will lead the relief efforts for the first 30 days as mentioned below



The **1st response** will be lead by the IRCS to serve the IDPs of mousl and it's mainly of 2 stages:-

- Stage one the evacuation and welcoming center to provide water ,ready meals , hygienic kits, medical and health services beside to reduce their agony and shock by psychosocial support ,prioritizing the vulnerable and special needs or medical emergencies .meanwhile registration and record will be aided government and its agencies staff
- Stage two the sheltering in camps (temporary or permanent camps ,provide the food baskets ,NFI ,awareness and educational programs in health promotion ,personal hygiene
- Stage 3 evaluation and surveying the continuous evolving situations and the number and needs of the families

This operation will start 0-30 days and may extended according to the need to 90 days

The **Sheltering** is joint responsibility between Government (GoI) and UN agencies

- The government majorly the Ministry of Displaced and Migration (MODM) , Ministry of Health (MOH) and Ministry of Trade (MoT)
- The United nation UNHCR,WHO,WFP
- Other NGO

They joined efforts between GoI collaborating with the KRG and governorate of Mousl to provide:-

- 1) Sheltering in or outside camps for the IDPs accordingly saving the standard of decent humanity and dignity of the IDP
- 2) Assist the IDPs in their legal documents that are lost during the escape
- 3) Provide medical and surgical services to the IDPs and maternity child care including vaccination
- 4) Provide the food ration for the displaced IDPs

The **Recovery** means long term service to regain the life and livelihood, education through either

- 1) Rehabilitation the camps with schools ,playground and primary health care services
- 2) Assisting in rehabilitation of the infrastructure of their cities ,towns and villages and active resilience programs

NOTE

The sheltering and recovery have **unlimited duration** since they count on the military operation and security clearances

The national emergency plan was approved and endorsed by the Iraqi government (the prime minister office order on July 11th 2016 issue no.8826/64 that was based on the PM/NOC meeting recommendation to adopt national relief operational plan) when it comes to internally displaced persons.

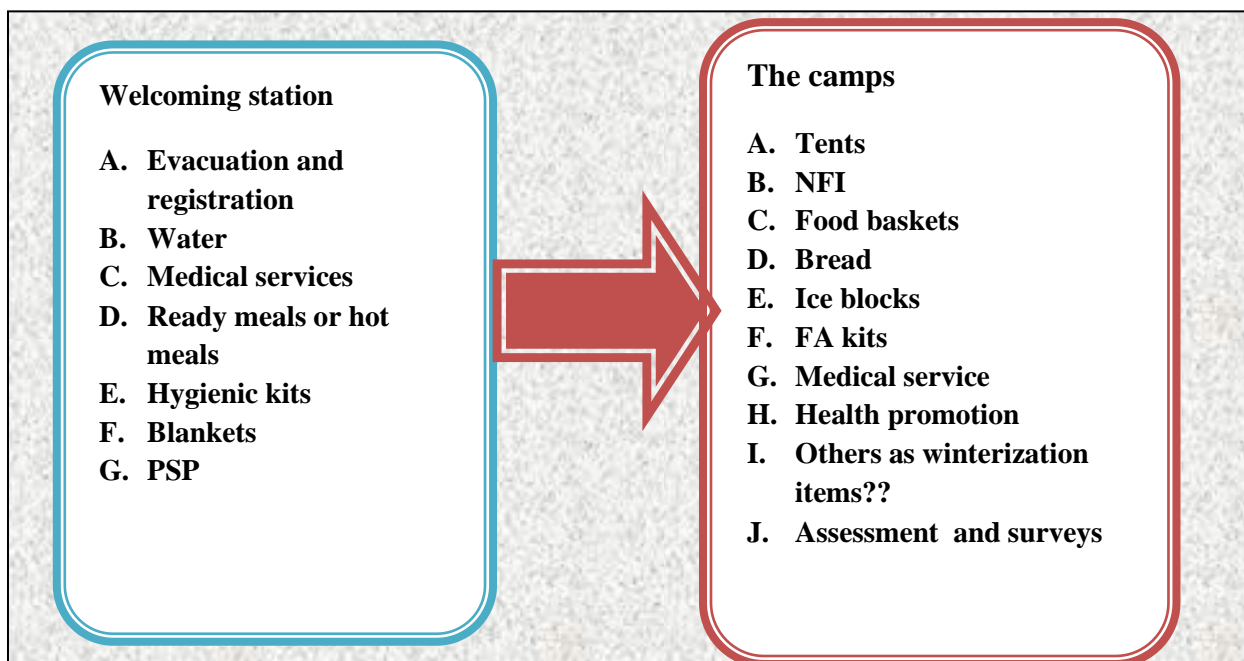


The Iraqi Red Crescent Society

B-what are the routes for the IDPs?

Moussul is a big city, the operations may take different protocols, and we may face siege districts, internal displacements within the city districts *(looking at airdrops or inside the city aid) or outside the city in the predicted routes that are safe for the IDPs to reach the camps: are safe with army control especially the first 3 routes

Route and camps	Direction FROM Moussul center	Distance in Km
Zeilkan	NE	12
Tel-Usquf	N	31.5
Hassan Shamy	E	35
Queer	SE	48
Zummar	NW	78
Sherqat	S	115



The IRCS operational plan as first responder for the first 30 days include:-

C-Needs

1. Cooperation and coordination with the all actors and stakeholders to better services ,update information and assessment ,monitoring and evaluation the operations
2. The operation cell to be located in Erbil for enhance the communication and excess
3. The IRCS crisis cell prepared and endorsed :
 - * The human resources including the volunteers and field officers in first responders teams in Disaster management ,Water and sanitation



The Iraqi Red Crescent Society

- * Medical and health teams and ambulances with first aid kits
 - * Communications officers and media coverage
 - * Logistics and warehouses
4. Impeded offices in the camps that assess ,evaluate and survey the camp residences needs and update the IRCS crisis cell data base
 5. Budget for this operation in providing what is required only with no administrative or staff fees need **37,390,495,00USD** to cover 100,000 families (500,000 person) as listed below

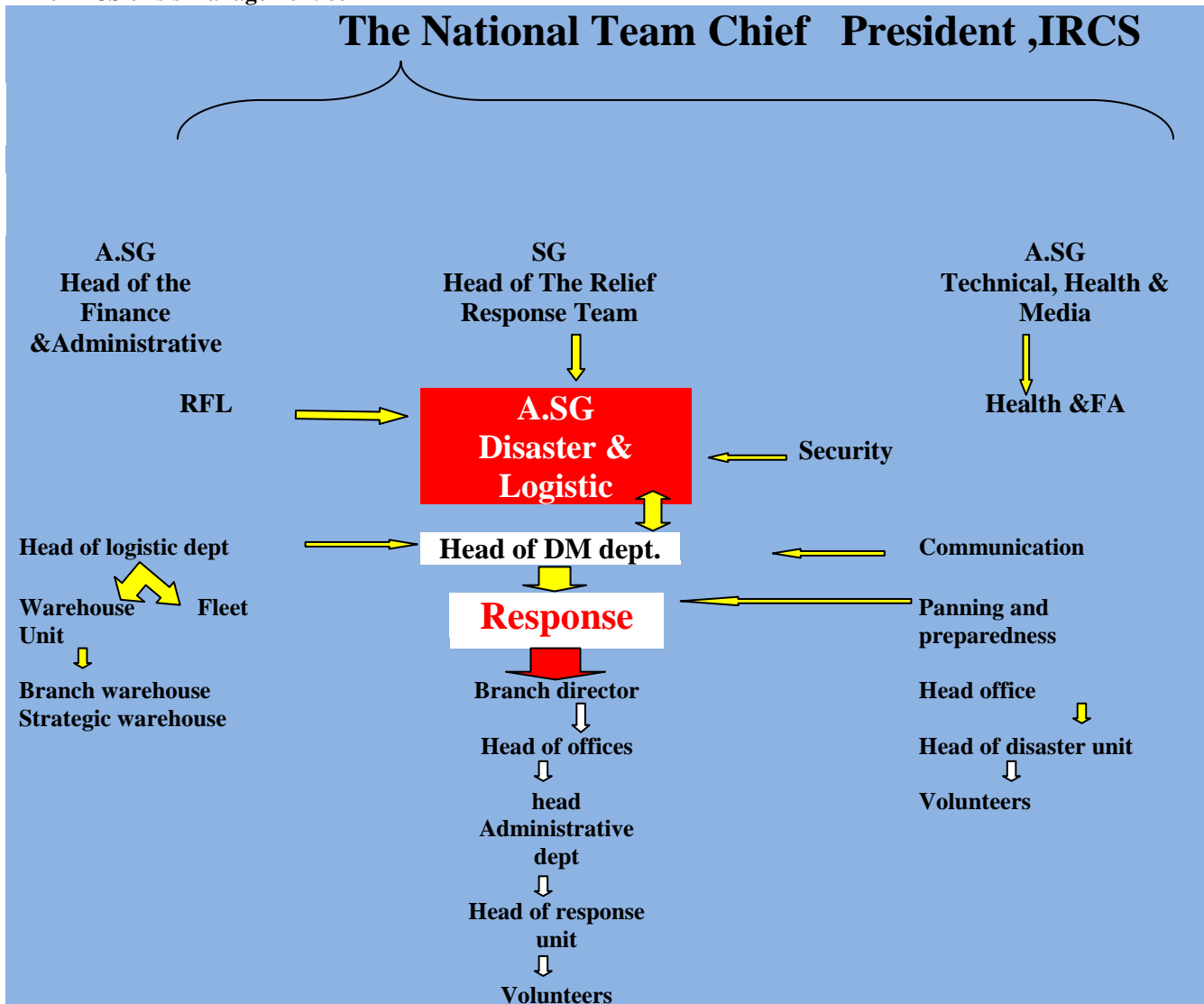
Item	Amount	Unit \$	Total \$
Food basket	300,000	20,00	6 Million
Hot meal	1,500.000	2,00	3million
Dry ready meal	200,000	8,00	1.6million
Water bottle set	100,000	1,50	150,000
Hygiene kit	200,000	20,00	4 million
Kitchen set	100,000	20,00	2 million
Blankets	500,000	10,00	5million
Tent	20,000	350,00	7 million
First aid kit	100,000	20,00	2million
Mobile RO units 2m3/h	20	35K	700,000
Electric generator ½ MV	ONE	90K	90,000
Mobile oven 1600 piece/d	20	25K	500,000
Commune latrine	5000	750,00	3,750,000
Mobile ice block factory	20	50K	One million
Ambulances	10	50K	500,000
Running cost			700,495
Mobile medial units	50	Excluded from the total	
Total			37,390,495\$

*****The quality and quantity of all items we provide follow the international standard of Sphere , IFRC and all consumable food, medications are approved after testing by the quality control institute of the Iraqi government Ministry of Health**



The Iraqi Red Crescent Society

The IRCS crisis management cell



Listed below the details if the food basket and the dry ready meals

THE CONTENT OF THE FOOD items and their deliverable packing

Food Basket IRCS		Food Ration ICRC		Ready Dry Meal IRCS		New ready meal box IFRC	
Item	Amount	Item	Amount	Item	Amount	Item	Amount
Rice	4.5 kg	Beans	4kg	Sesame oil	500gm	Sesame oil	300gm
Lentil	2 Kg	Lentil	4kg	Molasses or Dates	400gm 1000gm	Molasses	500gm
Dry beans	2Kg	chickpeas	2kg	Cheese	4 packets of 6 pieces	Cheese 8 pcs. pack	2 packs
Noodle	1Kg	Cooking oil	5l	Dry Milk	500gms	Jam	500gm
Spaghetti	1Kg	Tomato paste	5 can ×400gm	Dry biscuit	4 packets of 6 piece each	Beans	900gm
Tomato	One 1/2 Kg	Sugar	2kg	Bread	5 breads per	Rice	4.5Kg



The Iraqi Red Crescent Society

paste	can				day		
		Salt	1kg	Disposable plates	4-5	Tomato paste	830gm
Cooking oil	2liters	tea	2 kg	Optional		Cooking oil	2liters
Tea	1/2 Kg	Rice	35kg	Water	12bottle 500cc each		
Sugar	2Kg			Usually we give the water separate If children among the family with special milk formula we fulfill that			
Salt	750gm						
Calorie	2100Cal/day /person						
Standard	Sphere						
Time	14days	One month			3 days		
Unit price	20\$	Unit price		Unit price	8\$ If water added 1 \$ total of 9\$	Unit price	19.75\$
Needed	300000 basket			Needed	200000 boxes		

The Hygiene Kits

Supplied by the IRCS				Supplied by the ICRC	
Item	Amount	Items	Amount	Item	Amount
Soap	6 pcs	Soap		Soap	13 pcs
Tooth paste 2 tubes	70gm /tube	Tooth paste tube	one	Tooth paste 2 tubes	125gm /tube
Tooth brush	4	Tooth brush		Tooth brush	3 medium
Cloth washing powder	700gm	Cloth washing powder	700gm	Cloth washing powder	4kg
Liquid Dish washing	800gm	Liquid Dish washing		Liquid Dish washing	1000gm
Children diapers 20 pcs	one	Children diapers 8pcs	pack	Shampoo	500ml
Women diapers 20pcs	One	Women diapers 10pcs	pack	Shaving brush	One
Razor blades 5pcs disposable	One	Razor blades disposable 5pcs	One	Razor blades	10
Hand detergent	500gm	Hand detergent	One	Hygienic pad	40
		Shaving brush	One		
		Baby shampoo 200cc	One		
		Shaving paste	One		
		Tissue box	One		
		Talc powder	one		
		Anti-lice shampoo	One		
		Shower lufa	One		
		Small baby towel	One		
		Cotton balls pack	One		
		Comb	one		
		Health promotion folder	4		



The Iraqi Red Crescent Society

The non food item kits

IRCS		ICRC	
Item	Quantity	Item	Quantity
Thermos	One	Thermos	1
Cooking Pots Set 2	Large and Small	Hand Towel	2
Jerri Can 20L	2	Jerri Can 20 L	2
Kettle	-----	Kettle	1
Cooking Stove	One	Cooking Stove	1
Blanket	4	Blanket	6
Lantern	One	Tarpaulin	1
Air Cooler Or Heater	One	Kitchen Set	?
Food Plate Stainless Steel	4		
Stainless steel spoon	4		
Stainless steel cups	4		
Stainless steel knife	One		
Ladle	One		

D-Challenges

What can be expected as challenges that need utmost preparedness and adopt dynamic operational plan to uncalculated variants:-

1. Military zone with rules
2. Lack or jammed communications
3. Roads blocks (including AP-landmines or UXOs)
4. Security checks
5. Extreme weather
6. Public facilities (hospitals ,PHC ,shelters ,gas stations)
7. Different ethnic groups have different needs
8. ISIL act of vengeance

The IDPs fleeing Mousl city will probably adopt one of the following roads to reach safety so careful assessments to the developing changes and better cooperation with the authorities local and central can allow earlier services and best evacuation with the circumstances

Conclusion

The operation for mousl liberation is the biggest humanitarian challenge that will face any humanitarian workers especially inside Iraq.

the Red Cross Red Crescent movement will take the major role under the leadership of the Iraqi Red Crescent Society and facts on the ground they might be the only players!! , we need as a movement and one family to endorse this opportunity for serving the vulnerable and better future to all .

It's a best opportunity to

For further information contact:-

International Relations Department

Mobile: + (964)7704621141

E-mail: relations.dept@ircs.org.iq